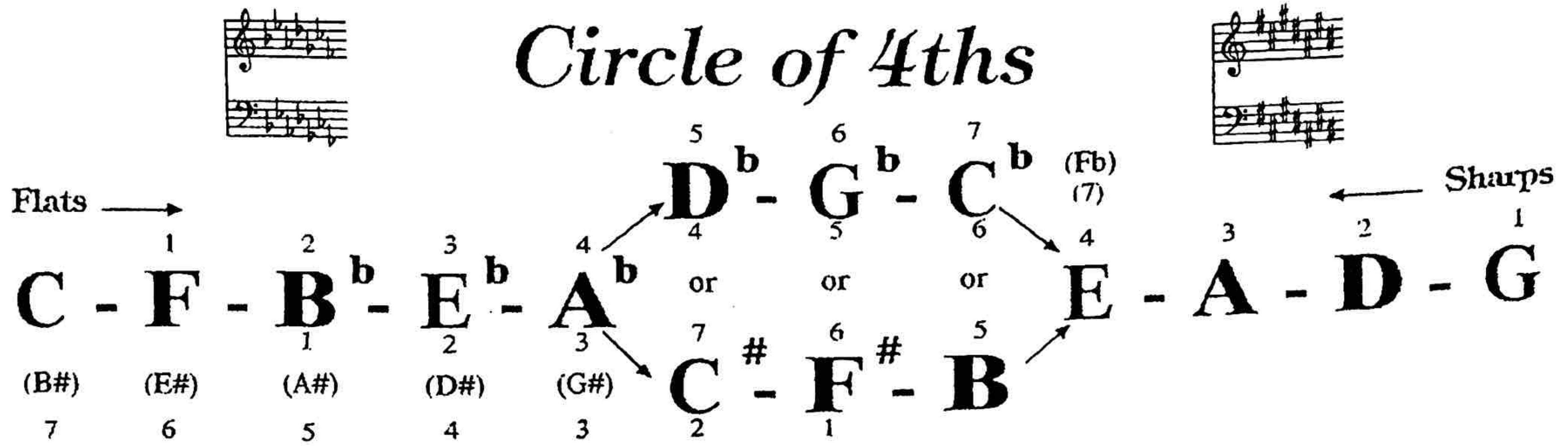


Circle of 4ths



The top number indicates the number of flats or sharps in that particular scale.
The bottom number indicates the correct order of flats or sharps.

Woodwind Choir

Group 1	Group 2	Group 3	Group 4
Piccolo Oboe Eb Clarinet 1st Flute 1st Clarinet 1st Alto Sax	2nd Flute 2nd Clarinet 2nd Alto Sax	3rd Clarinet Alto Clarinet Tenor Sax	Bass Clarinet Bassoons Bari Sax Contra Clarinets

Brass Choir

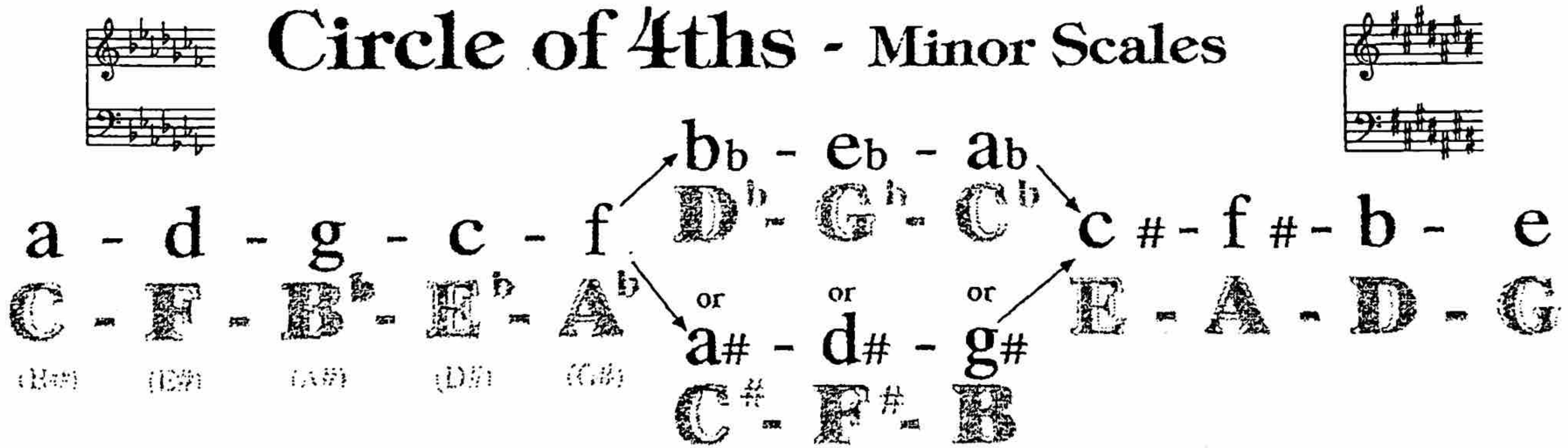
Group 1	Group 2	Group 3	Group 4
1st Cornet 1st Trumpet 1st French Horn 1st Trombone	2nd Cornet 2nd French Horn 2nd Trombone	3rd Cornet 2nd Trumpet 3rd Trombone 3rd & 4th French Horn	Baritone Euphonium Tuba String Bass

Percussion

Vibraphone (soft mallets) Xylophone (soft mallets) Marimba (soft mallets) Tympani

© Copyright 1991 MEREDITH MUSIC PUBLICATIONS

Circle of 4ths - Minor Scales



The small letter (a - d, etc.) above the shadowed capital letter indicates the relative minor scale.

Woodwind Choir

Group 1	Group 2	Group 3	Group 4
Piccolo Oboe Eb Clarinet 1st Flute 1st Clarinet 1st Alto Sax	2nd Flute 2nd Clarinet 2nd Alto Sax	3rd Clarinet Alto Clarinet Tenor Sax	Bass Clarinet Bassoons Bari Sax Contra Clarinets

Brass Choir

Group 1	Group 2	Group 3	Group 4
1st Cornet 1st Trumpet 1st French Horn 1st Trombone	2nd Cornet 2nd French Horn 2nd Trombone	3rd Cornet 2nd Trumpet 3rd Trombone 3rd & 4th French Horn	Baritone Euphonium Tuba String Bass

Percussion

Vibraphone (soft mallets) Xylophone (soft mallets) Marimba (soft mallets) Tympani

© Copyright 1991 MEREDITH MUSIC PUBLICATIONS