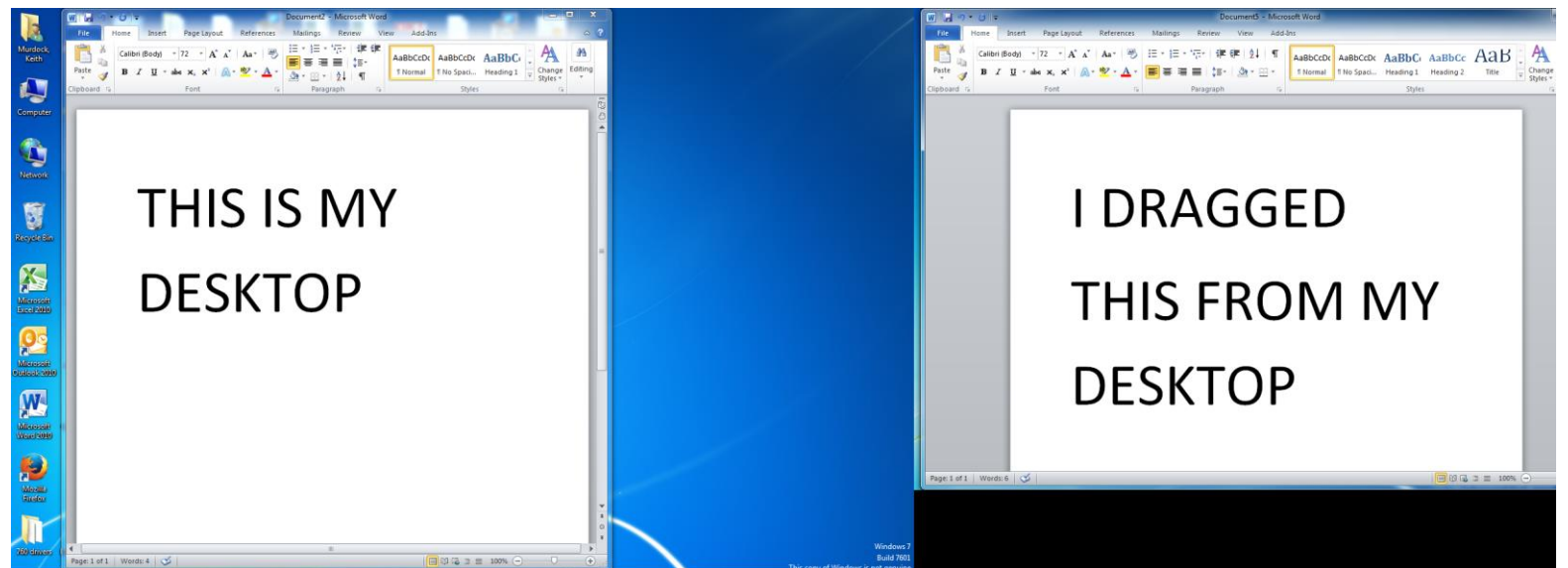
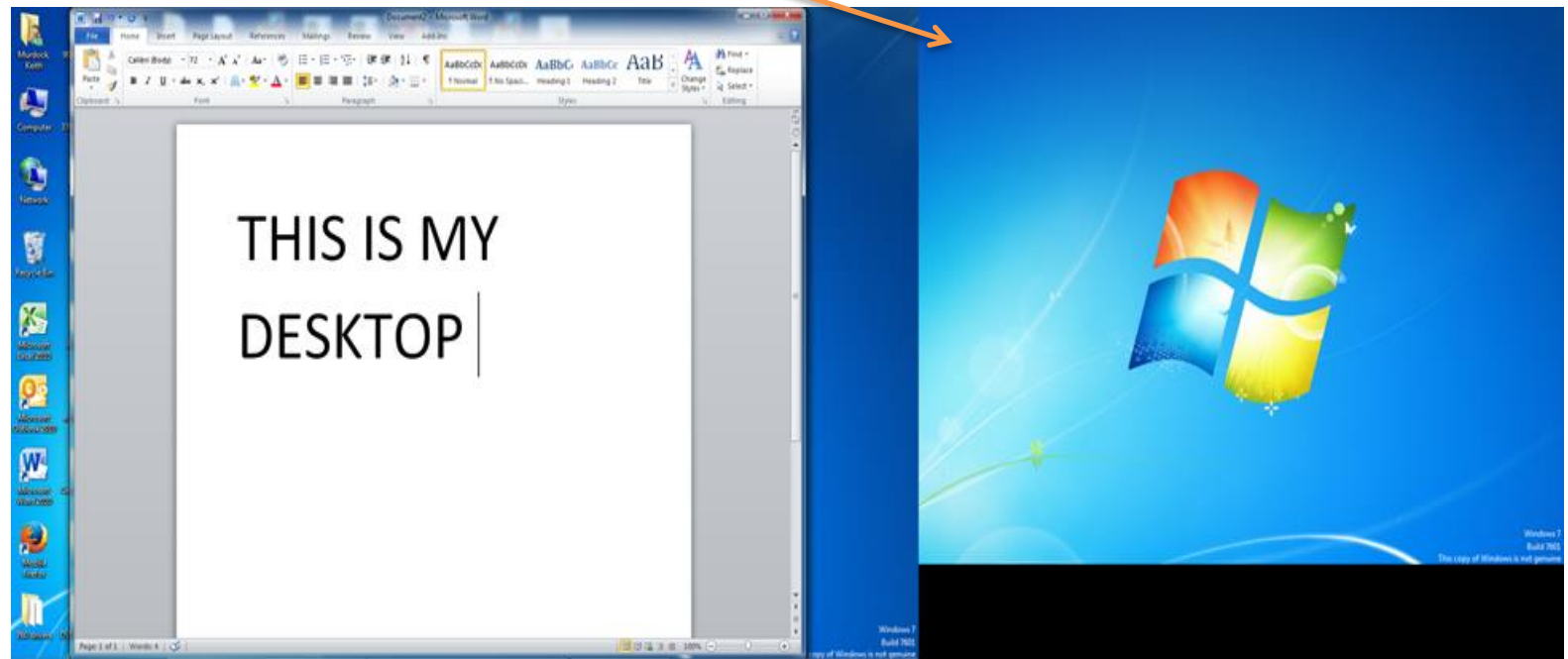


WELCOME TO YOUR NEW SMART BOARD COMPUTER

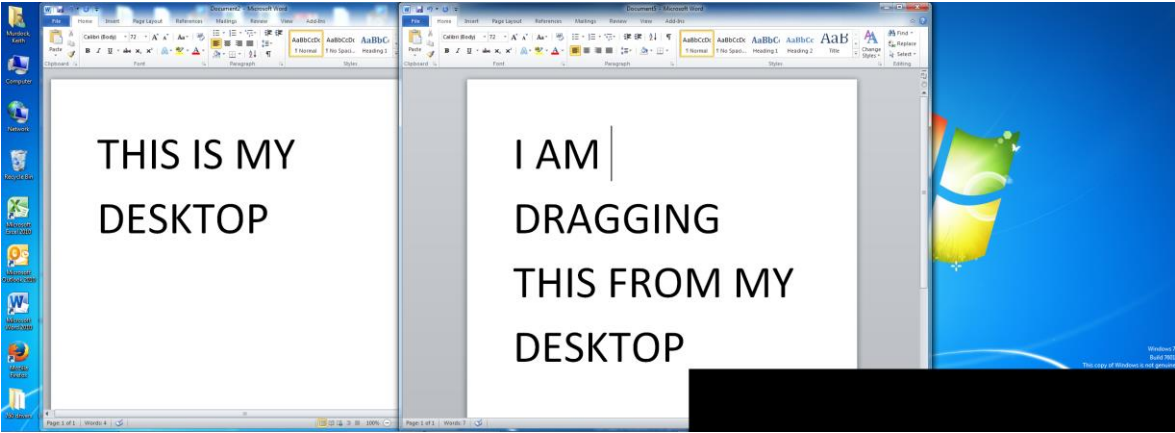
There is a feature that allows you to split your screen between your desktop and your Smart/Eno Board. It allows you to display material you want the classroom to see on the board while allowing you to do what you need to on your desktop.

This is known as extending your desktop. It is like having two separate screens. The first photo is how it looks normally. The second has a document that was “dragged” to the other “screen”.

IF YOUR SMART/ENO BOARD LOOKS LIKE THE PICTURE ON THE RIGHT SIDE YOU ARE ALREADY CONFIGURED FOR EXTENDING YOUR DESKTOP. (If your monitor looks like the picture on the right and your SMART/ENO board looks like your desktop normally does please submit a schooldude ticket we need to reverse that)

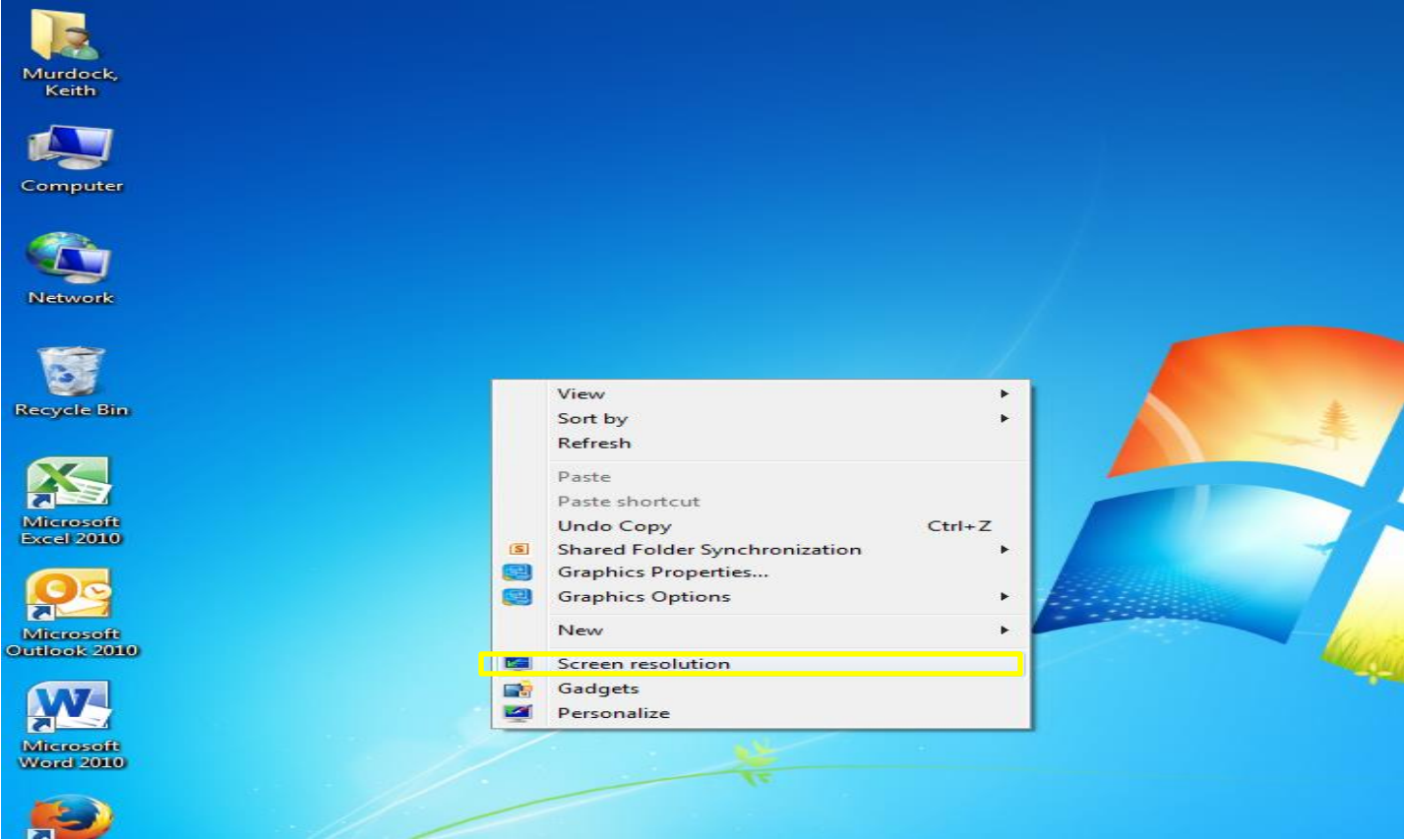


HOW TO DO THIS: "GRAB"(left click and hold the left mouse button on the top of the item you want to move) While still holding your mouse button down slide your mouse to the right moving the item off your screen onto the Smart/ENO board's screen.



WHAT IF I WANT IT THE WAY I HAD IT LAST YEAR?

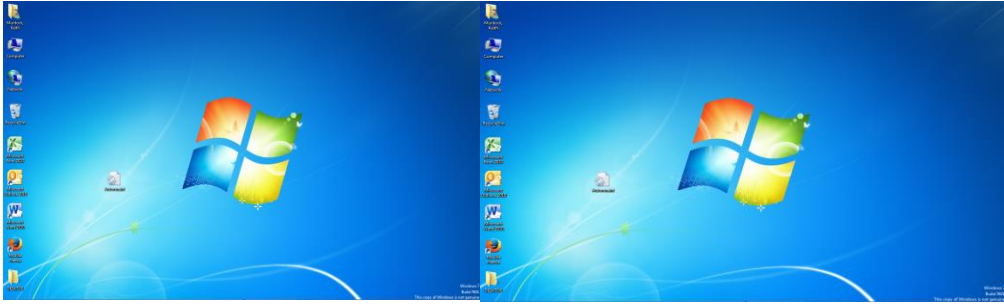
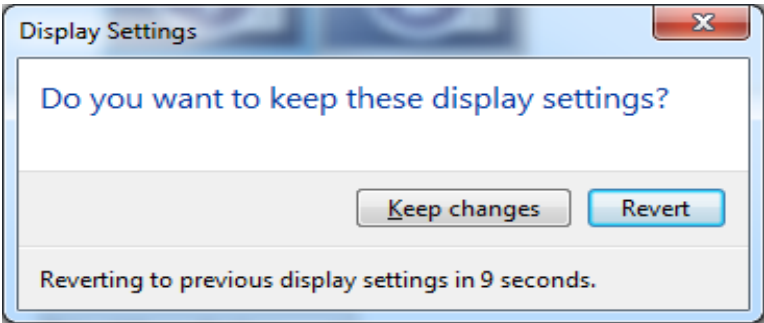
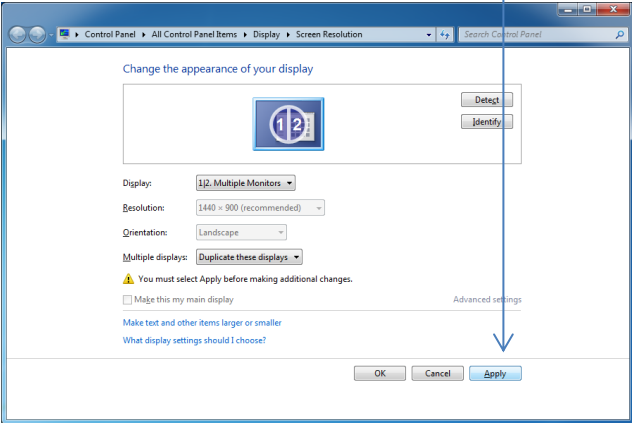
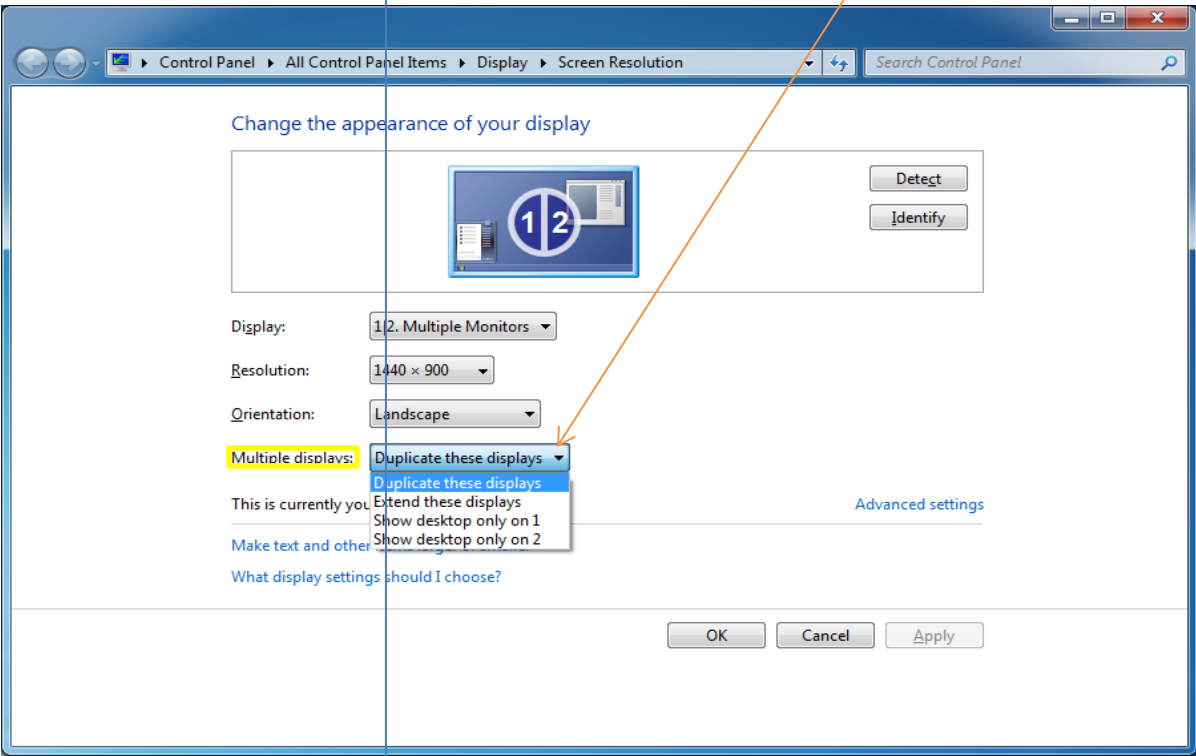
To duplicate your screen (the way it was last year) Right Click in any blank space on the desktop, not on an icon. On the menu that appears go down to **screen resolution** and left click.



You will see the screen on the following page:

Under the option **Multiple displays** (NOTE: This will only appear when both the projector and monitor are turned on, this won't work with the projector and/or monitor turned off) You will see duplicate these displays in the drop down box. Left click on that choice. Then Click apply. You will get the confirmation screen shown below (right). Choose **KEEP CHANGES** .

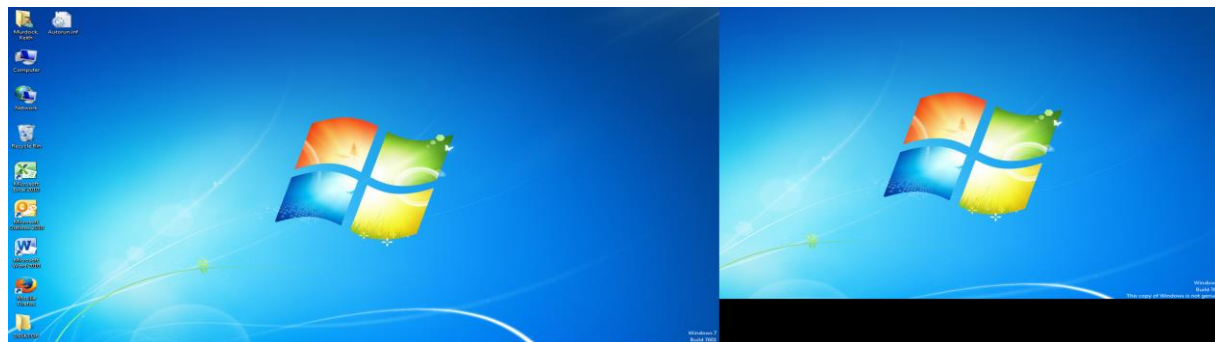
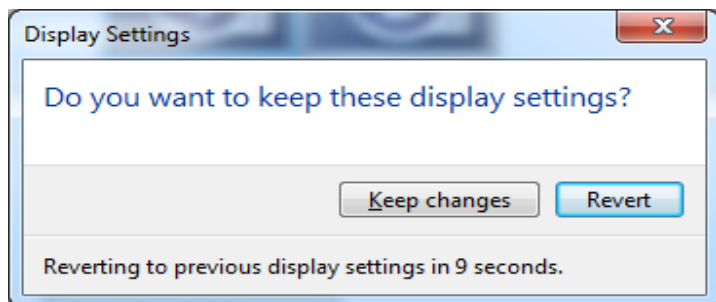
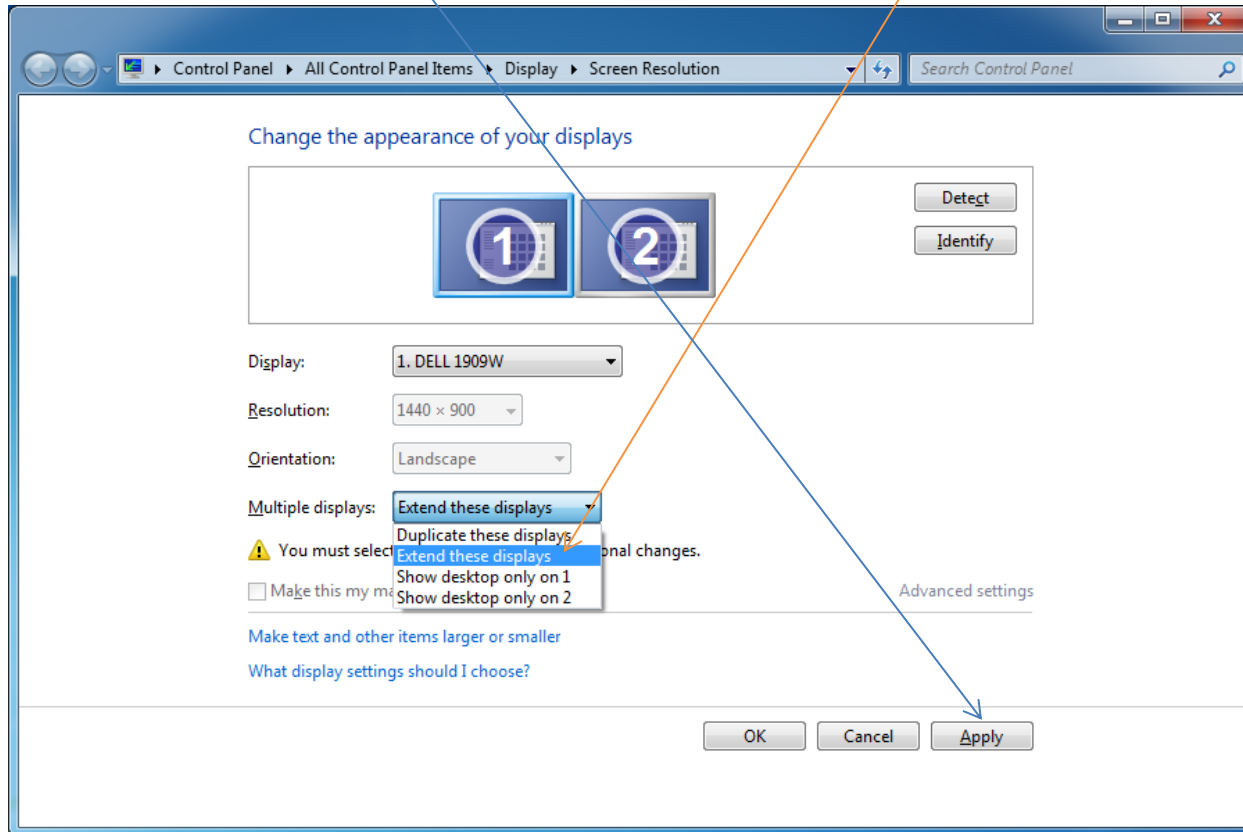
Your desktop is now duplicated to the Smart/Eno Board.



WHAT IF I HAVE IT THE WAY IT WAS LAST YEAR AND WANT TO USE THIS FEATURE?

Under the option **Multiple displays** (NOTE: This will only appear when both the projector and monitor are turned on, this won't work with the projector and/or monitor turned off) You will see extend these displays in the drop down box. Left click on that choice. Then Click apply. You will get the confirmation screen shown below . Choose KEEP CHANGES .

Your desktop is now extended to the Smart/Eno Board.



If you find it acts differently than shown here please submit a schooldude ticket so we may assist.