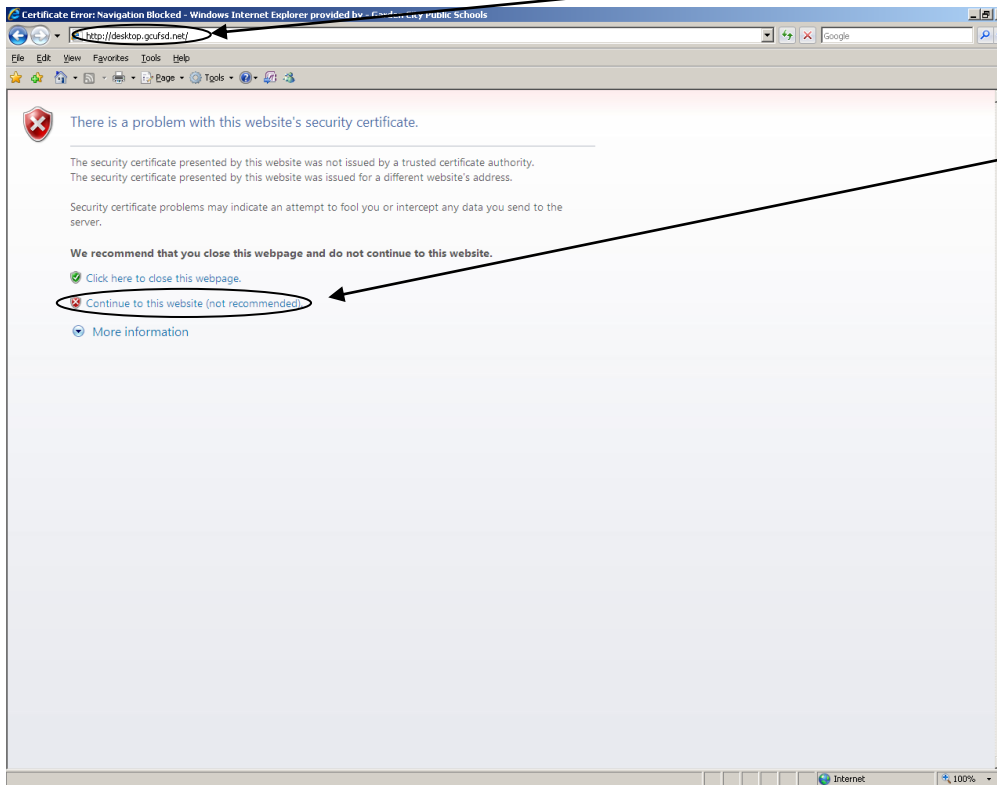
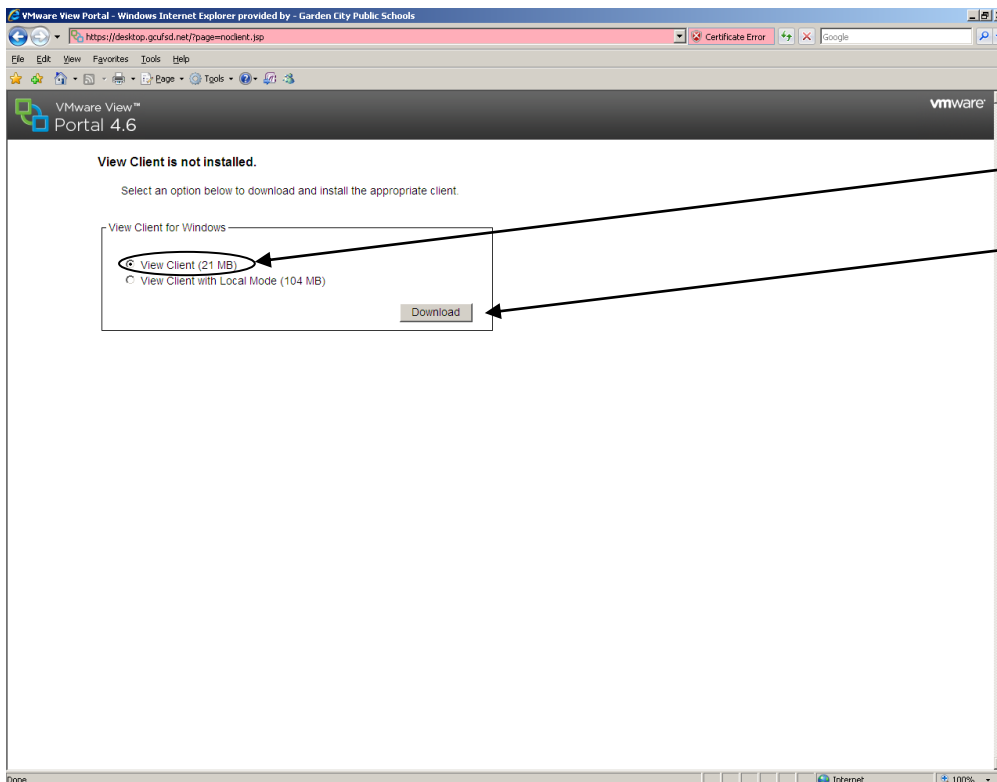


## Connecting remotely to the district from outside of the building.

Open Internet explorer and enter in the address bar <http://desktop.gcufsd.net>

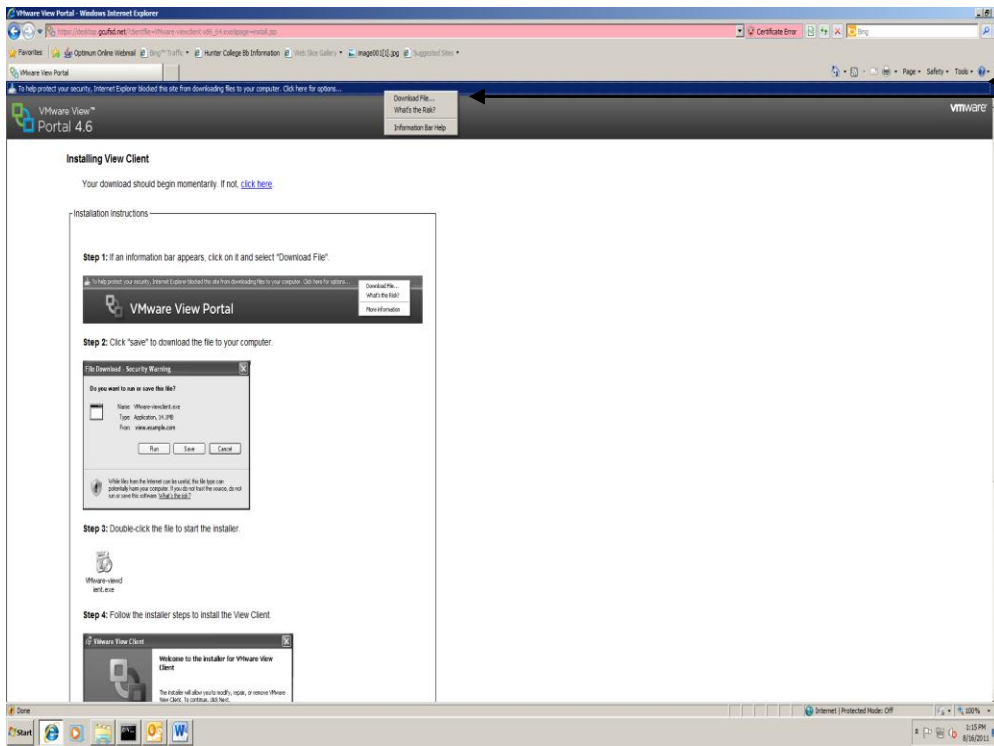


You might see the page displayed here, indicating a problem with the certificate. (There is no risk here) If you do, click on "Continue to this website" link.

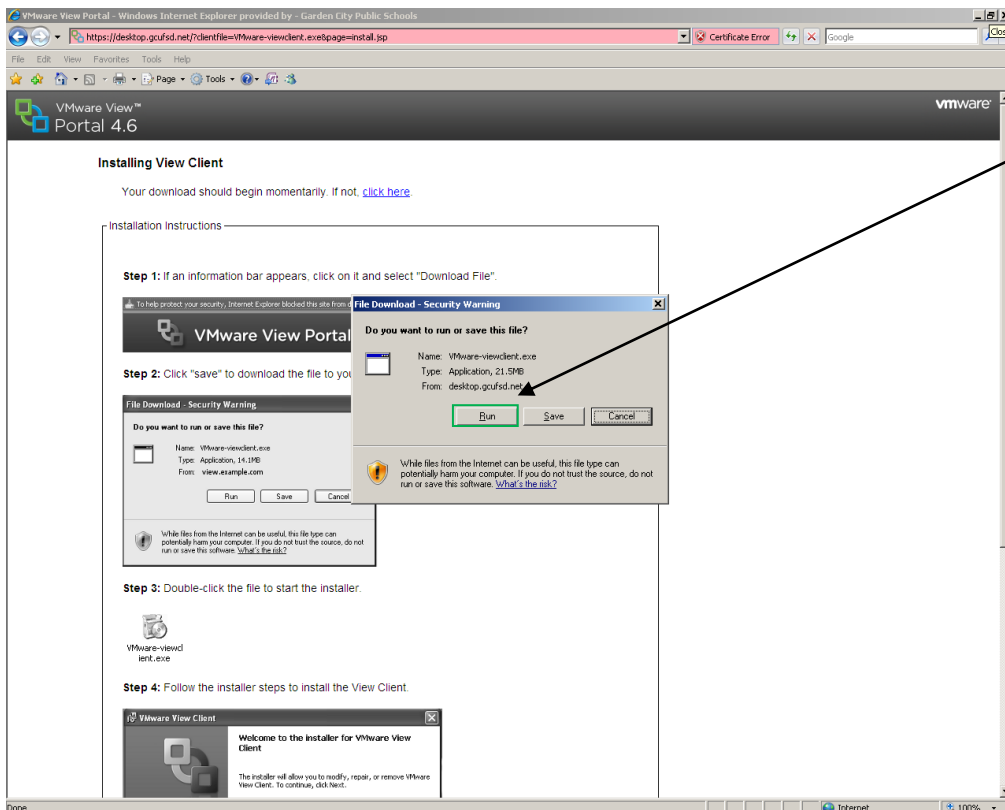


The "View Client (21 MB)" radio button should be already chosen, if not please choose.

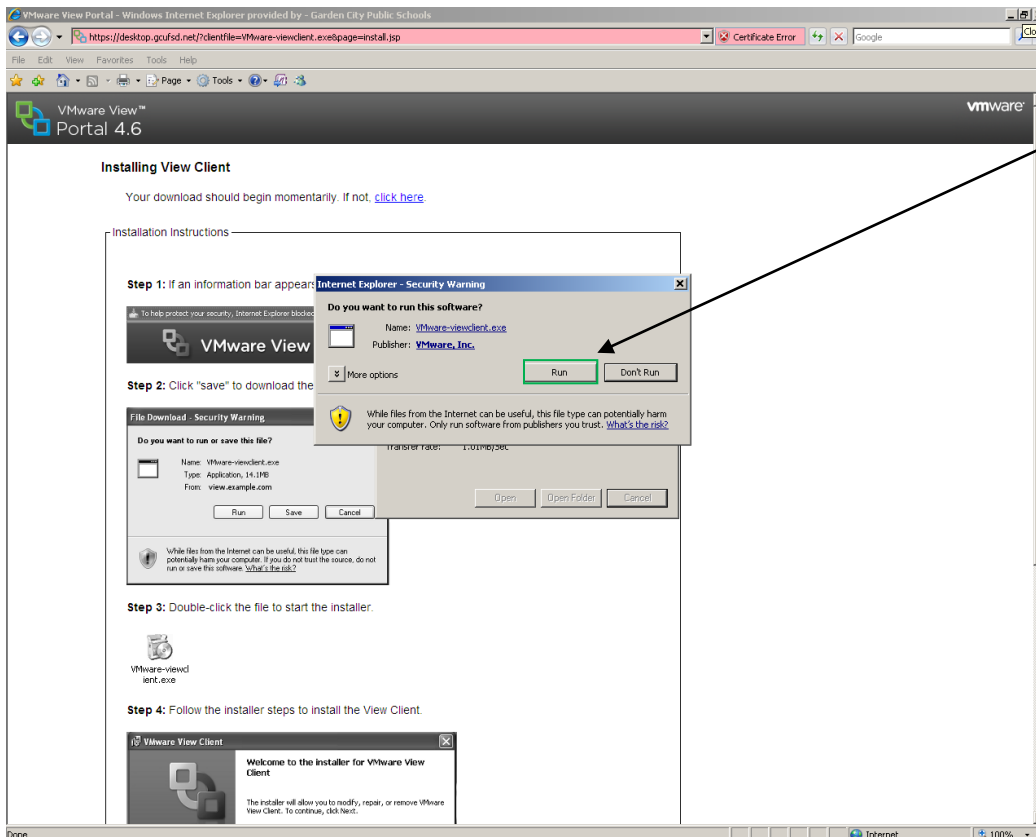
Then click the **Download** button



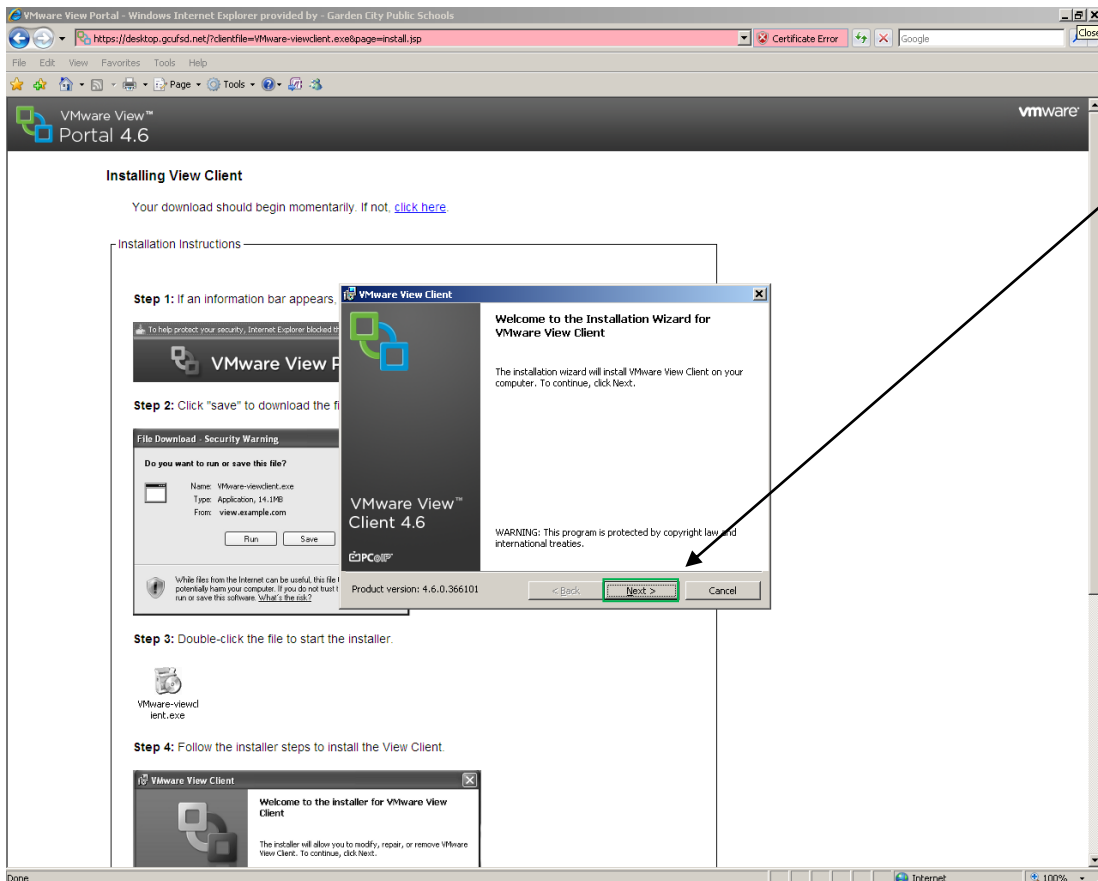
If you get the information bar seen here, click on it and choose download file



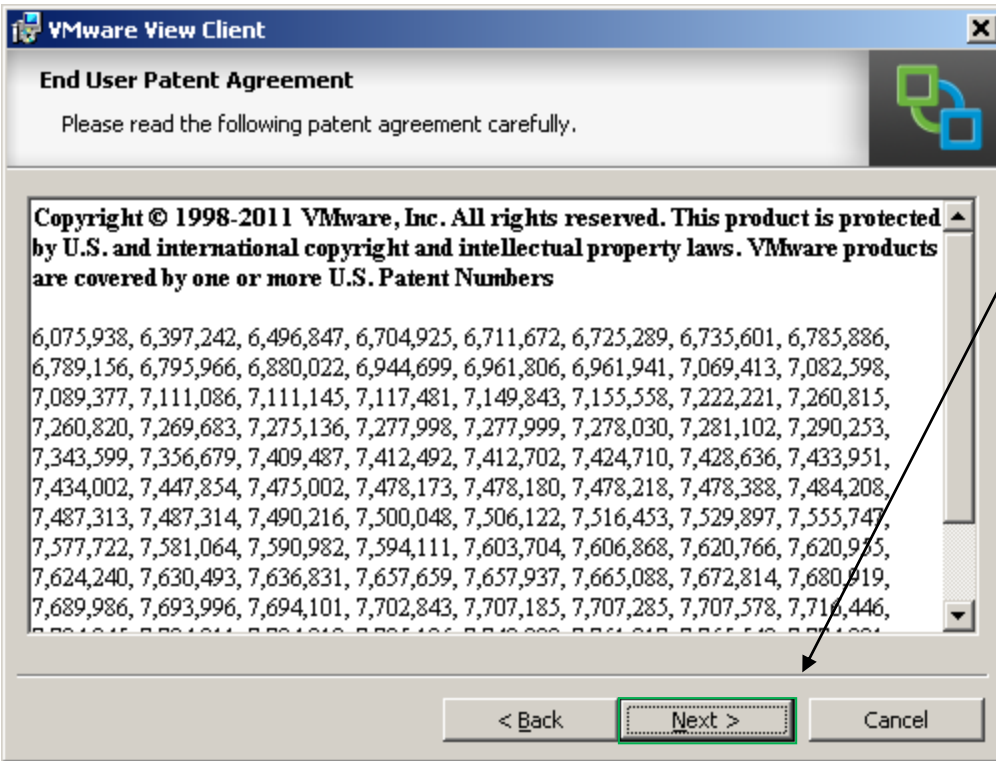
Choose Run when you see this dialogue box



Choose Run when you see this dialogue box

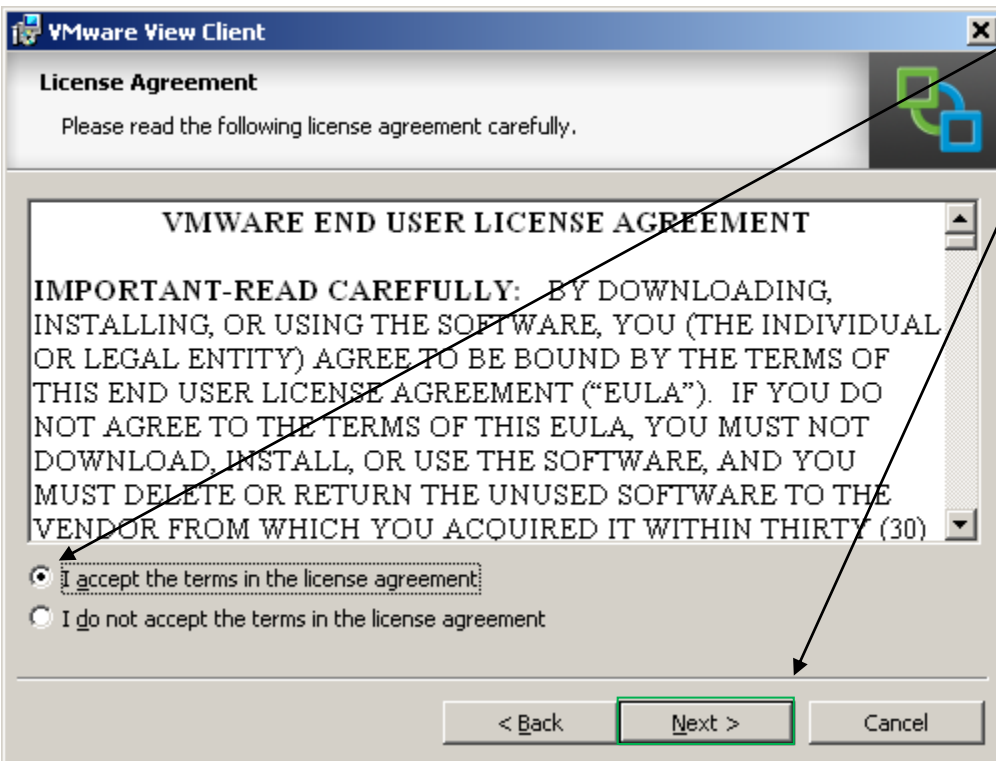


Choose Next when you see this dialogue box

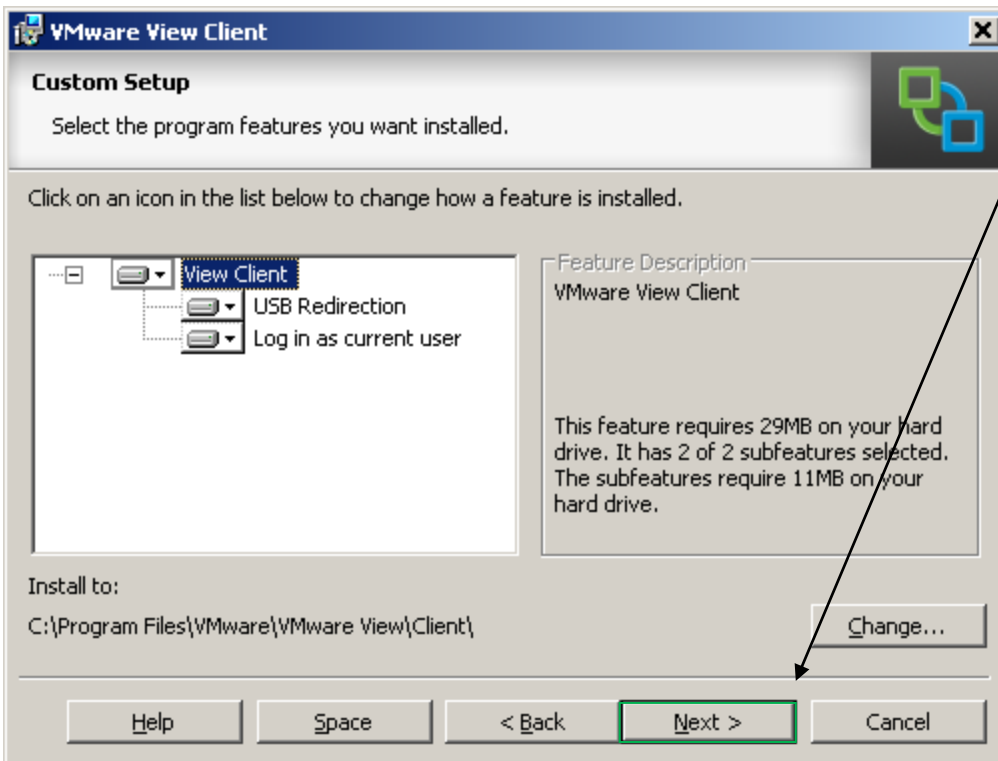


Choose **Next** when you see this dialogue box

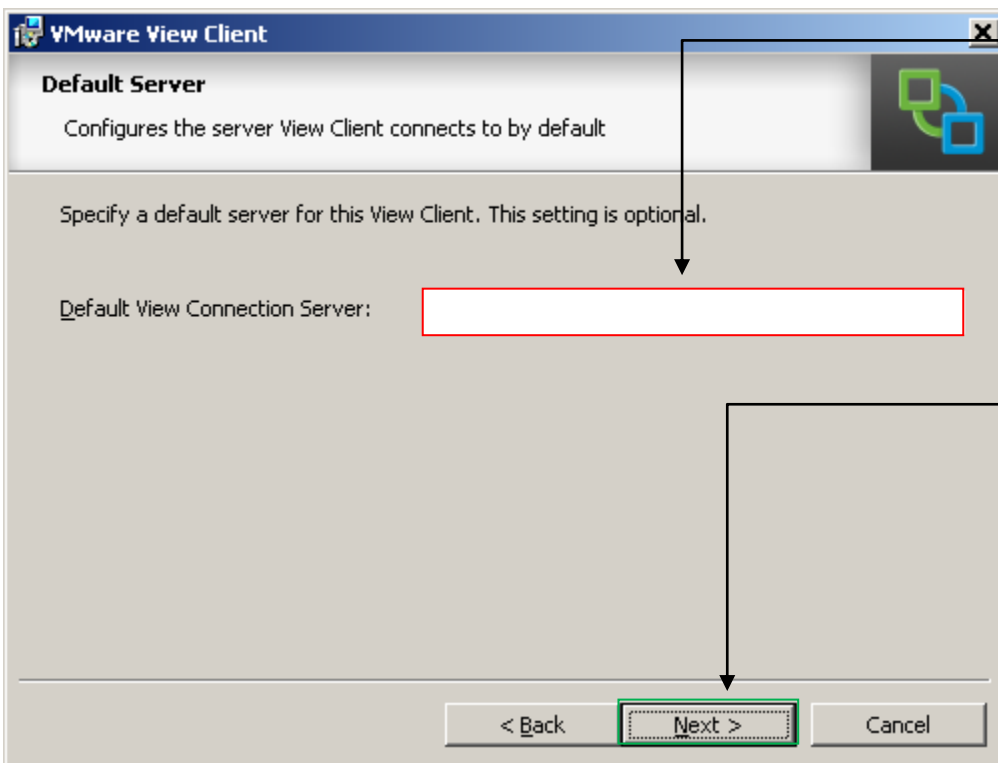
Make sure you choose "I accept".



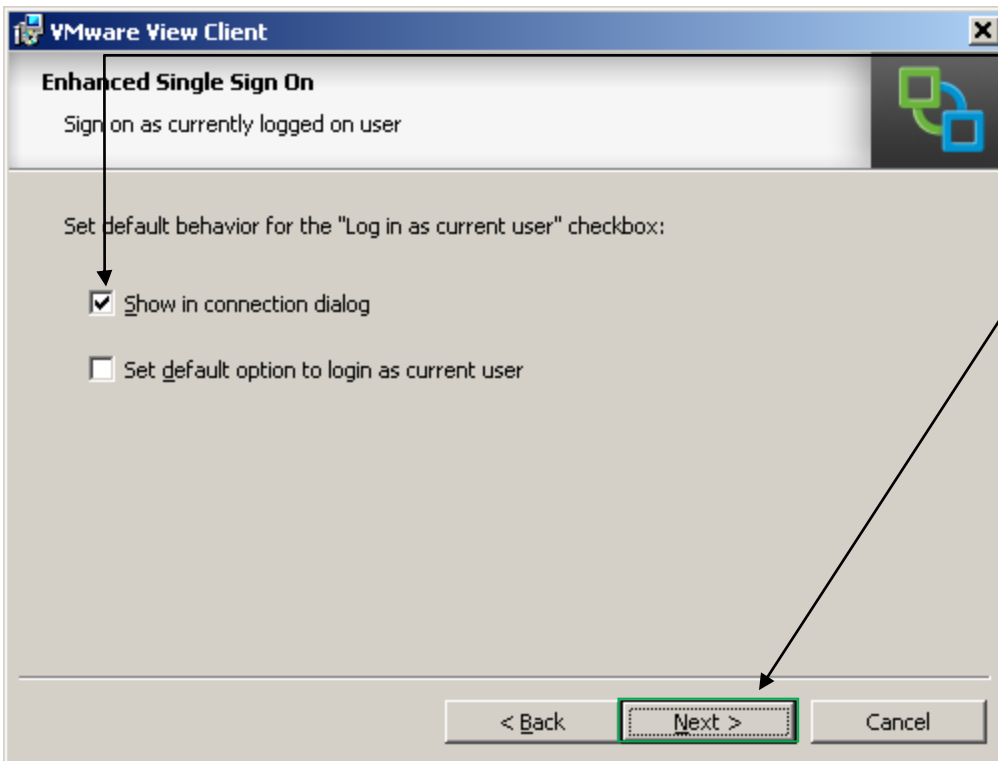
Choose **Next** when you see this dialogue box



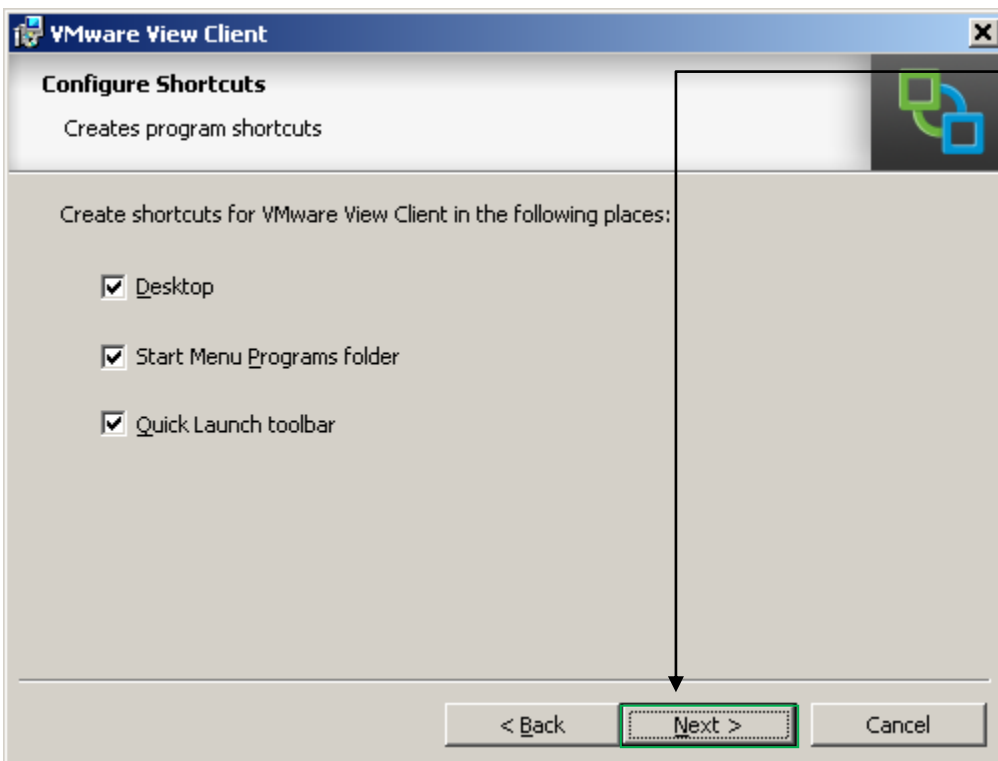
Choose **Next** when you see this dialogue box



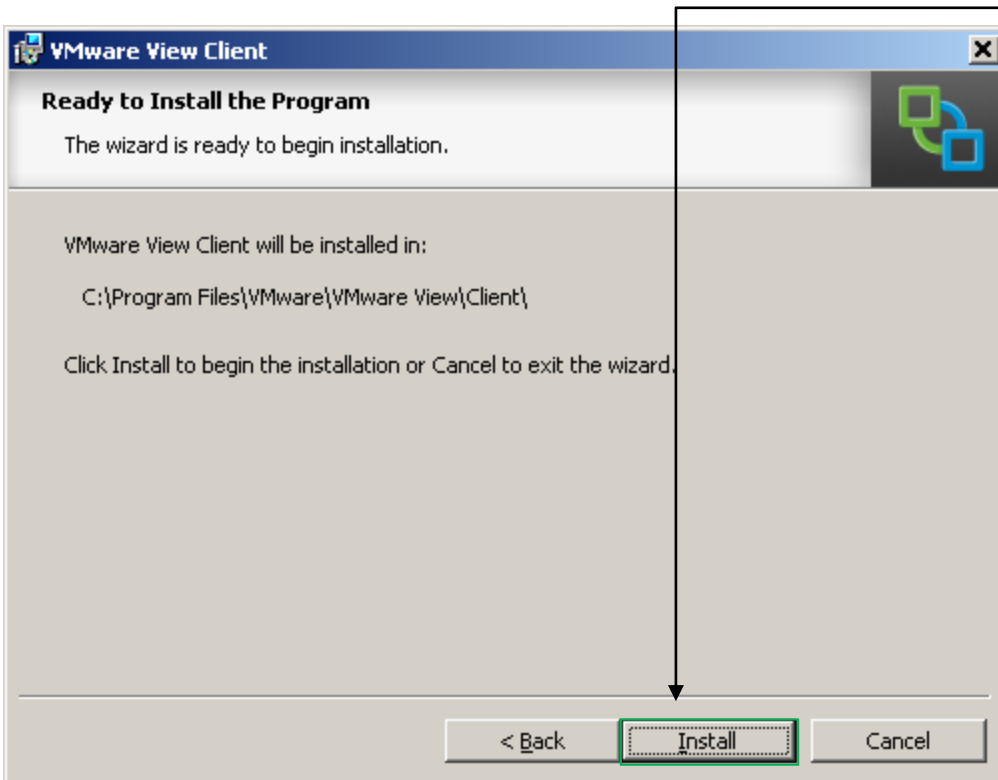
Leave this box blank and click **Next**



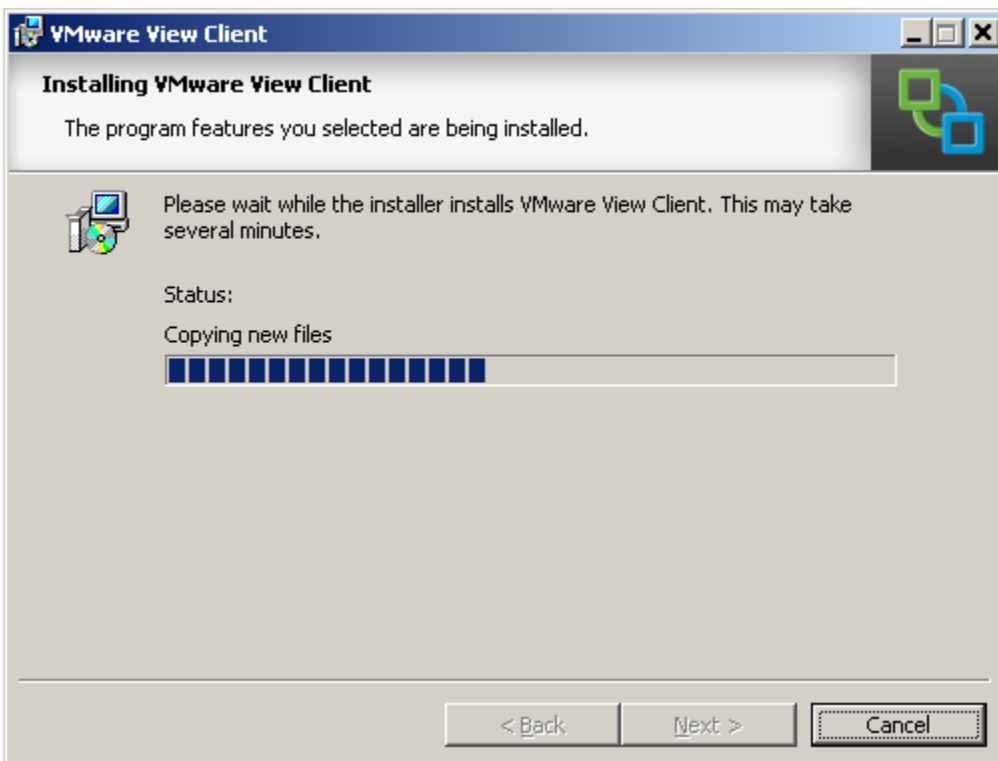
This box should be checked, if not please check it, then click **Next**



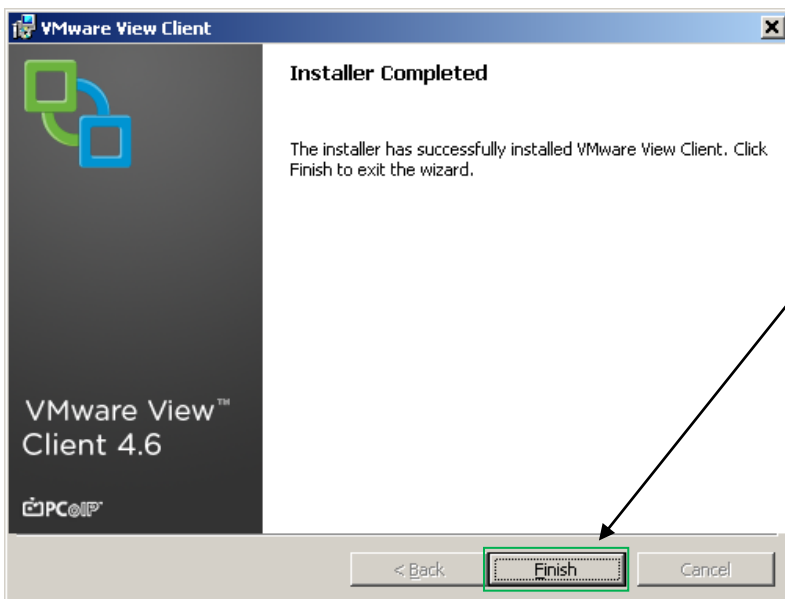
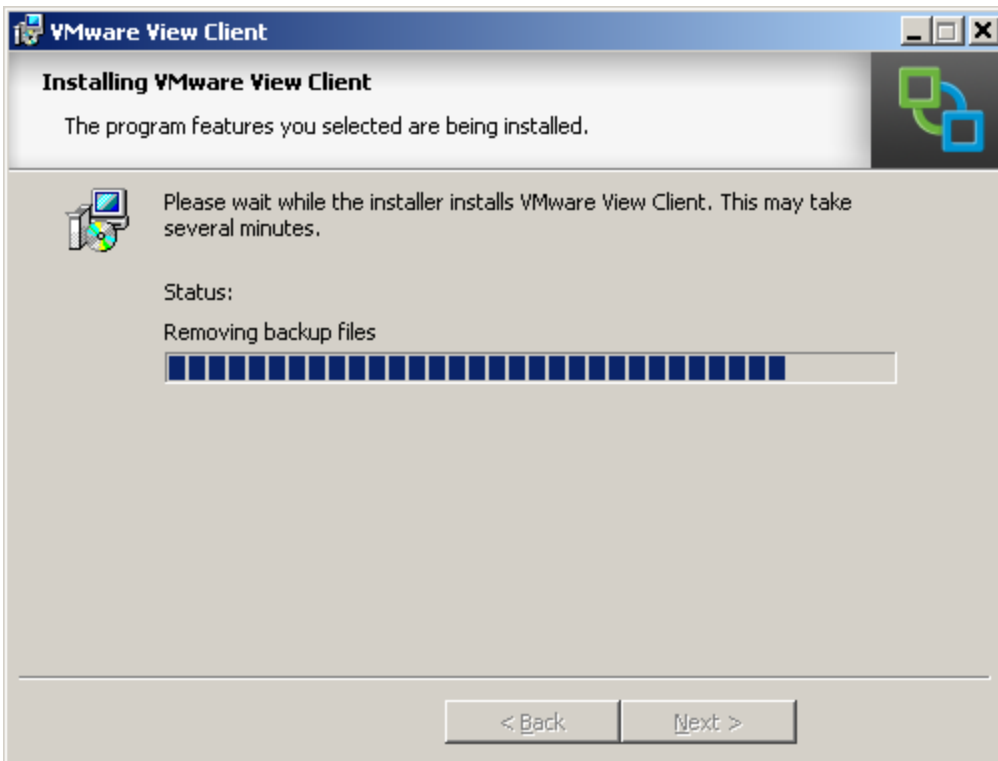
Choose **Next** when you see this dialogue box



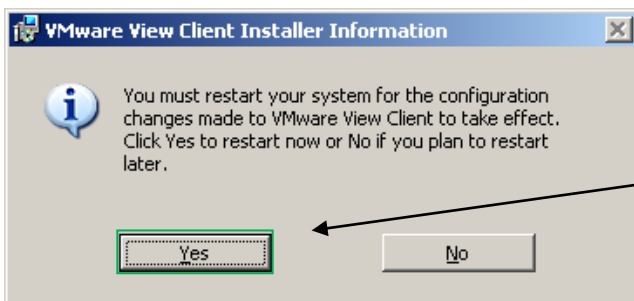
Choose **Install** when you see this dialogue box



Do nothing here, except watch the blue bar go by!

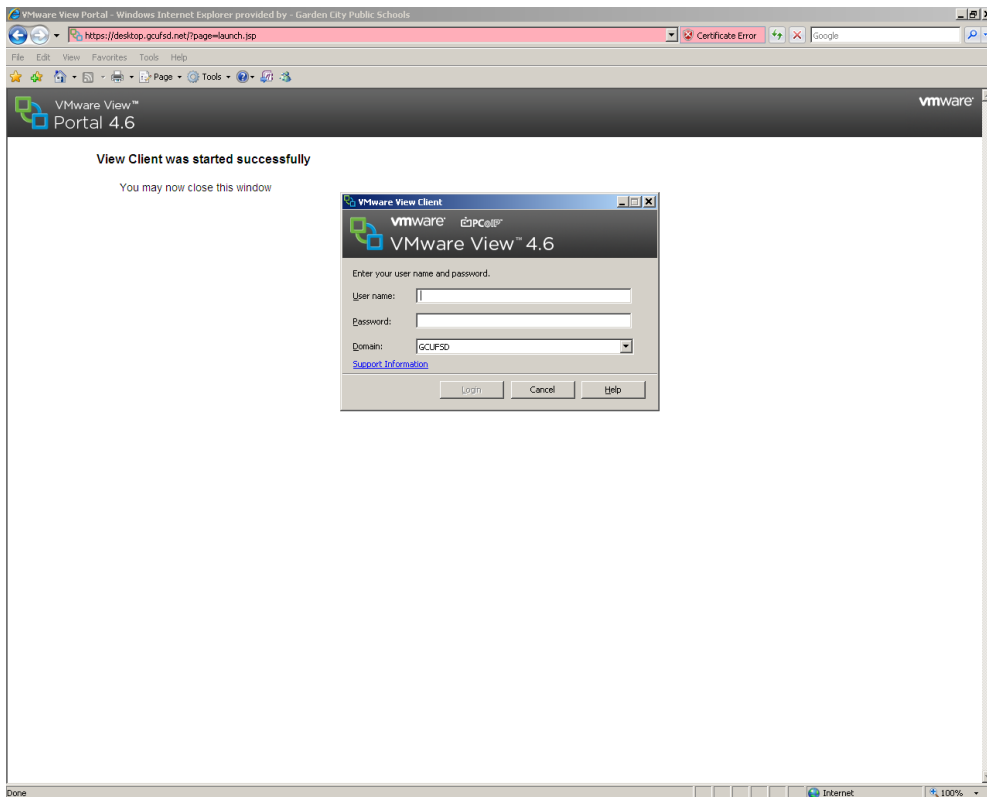


Choose **Finish** when you see this dialogue box

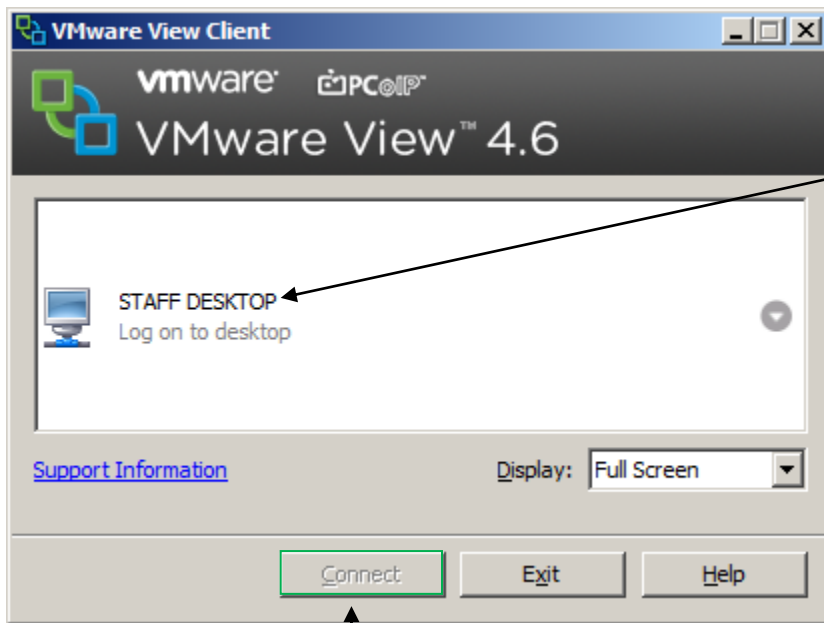


Choose **Yes** when you see this dialogue box





Once your computer restarts, open internet explorer and type <http://Desktop.gcufsd.net> and press the return key. Once this box appears type in your login information that you would use when logging into the school computers.



Choose the Staff Desktop and click Connect

VMware View Client

vmware PCoIP  
VMware View™ 4.6

Enter your user name and password.

User name:

Password:

Domain:

[Support Information](#)

When this window appears, enter the username and password you currently use to log in the school computers and click on Login.

You are now connected to the district network.